

©Raquel García

DOSSIER

# *DÉJÀ VU*

CIA. MANOLO ALCÁNTARA

TOUR 2020/21:



**PLATEA** PROGRAMA ESTATAL DE ARTES ESCÉNICAS

[WWW.CIAMANOLOALCANTARA.COM](http://WWW.CIAMANOLOALCANTARA.COM)



# SYNOPSIS DÉJÀ VU



**DÉJÀ VU** talk about the distance between a person and their dreams, between what they are and what they would like to be.

Very ambitious dreams that excite the delusions of grandeur, but are for the moment impossible, plunging that person into despondency.



Especially suggestive bold and fascinating... infused with a sharp sense of humor (a sharp sense of wit) and a touch of surrealism.





©Claudia Saez

A visual spectacle, void of text. The story has a hint of melancholy where the boundaries between reality and fantasy are blurred. Just as if Bartleby, the writer, was suddenly immersed in the fabulous world of Alice in Wonderland...

A garbled reality in an undetermined space and moment, with a stage set that plays with the extreme disproportion of the dimensions.



©Erin Bassa Photographer



©Raquel Garcia





©Erin Bassa Photographer

The universe of sound through the voice and the violin emphasises the duality of the character, sometimes repetitive, lively and joyful, like itself, transporting the audience to a dreamlike world.



©Erin Bassa Photographer



©Erin Bassa Photographer



**A visual spectacle, no text and direct music.**



©Erin Bassa Photographer



©Erin Bassa Photographer

**For all audiences, recommended since 7 years old.**

**Duration: 60 minuts.**

**Show for theatre or indoor.**



©Erin Bassa Photographer

# CREDITS DÉJÀ VU

***Idea, creation and direction:*** Manolo Alcántara

***Composition and musical direction and arrangement:*** Laia Rius

***Interprets:*** Laia Rius, Manolo Alcántara and Andreu Sans/Sílvia Compte

***Interprets: support:*** Joan Trilla

***Lighting desing and sound:*** Ivan Tomasevic

***Technician:*** Ivan Tomasevic/Pep Arumí

***Design and construction puppet:*** Toni Zafra

***Design and confection of costumes:*** Rosa Solé

***Props and pictorial finishes:*** Xavi Erra

***Design scenography:*** Manolo Alcántara

***Construction scenography:*** Eduardo Fernández and Cia. Manolo Alcántara

***Production musical:*** Pep Pascual i Laia Rius

***Sound, mixing and master engineer:*** Pep Pascual

***Guitars, lute and banjo:*** Josep Traver

***Double bass and electric bass:*** Ivan Tomasevic

***Percussion:*** Pep Pascual

***Cello:*** Maria Bou

***Violins and octave violin:*** Laia Rius

***Chorus:*** Xavi Túrnez

***Recorded in the study:*** "Casa Pepe"

***Management and Production:*** Clàudia Saez

***National Distribution:*** Portal71

***International Distribution:*** Alapista

***Production:*** Cia. Manolo Alcántara

***Production Support:*** Alfred Fort and Clàudia Saez for La Destil·leria

***Co-production:*** GREC Festival de Barcelona

***Support:*** ICEC - Generaliat de Catalunya and INAEM.

***In collaboration with:*** Teatre Principal of Olot, Teatres en Xarxa, Teatre Núria Espert of Sant Andreu de la Barca, Teatre Clavé of Tordera, Teatre Bartrina of Reus, Social Antzokia of Basauri and Teatro-Circo of Murcia.

***With thanks to:*** Guga Arruda, Raquel Garcia, Amèlia Bautista, Marie Pierre Durand, Toti Toronell, and all those people and organizations that have helped and collaborated to give life to DÉJÀ VU.



# BIO ABOUT CIA. MANOLO ALCÁNTARA

Cia. Manolo Alcántara.

Self-taught, I consider myself more as a craftsman than an artist. I create shows totally out of intuition, out of games and curiosity (which leads me to think at times that I know nothing whatsoever about the circus). I assume the risks of the circus and change it into something that can be shared by the public.

I understand, live and create the circus from evolution. A personal journey passing through different stages, all of which are important. In fact I cannot understand the present stage without any relation to a previous one.

This journey starts with a purely demonstrative interest to reach today, in which I like to hide the technique and put it at the service of the show.

In this process, I have got some constants, like a kind of DNA, that endures setting after setting. (comes up in each setting): creating patiently and gradually, preserving the suggestion to the graphic explanation of the stories, taking care of the visual aspect, using innovative structures and live music.

In his artistic career, he has won several awards:

**\**Genuinos Imperfectos* by *Circo Imperfecto* (2000):**

- Prize for "Best Street Show" at the Tàrrrega Theatre Fair (2001).
- "Aplaudiment Sebastià Gasch" (2001).

**\**Locomotivo* by *Solo Manolo* (2006) :**

- "Aplaudiment Sebastià Gasch" (2006).

**\**Plecs* by *Enfila't* (2010):**

- FAD Sebastià Gasch Prize at the Paratheatrical Arts (2010)
- Zirkolika Award for the best circus show (2010)
- Prize for the "Best show of the Internacional Autumn Festival of Theatre - FIOT" (2010)

**\**RUDO* by *Cia. Manolo Alcántara* (2014):**

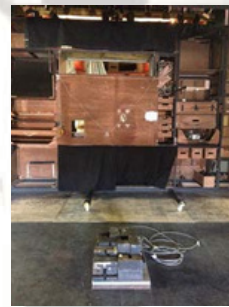
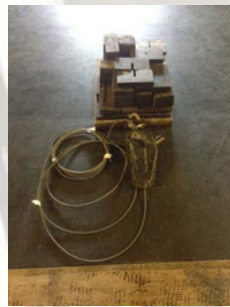
- Prize Best Street Show at the Umore Azoka Festival in Leioa (2014)
- Zirkolika Award for the Best Indoor Circus Show (2015)
- FETEN Prize for the best show in the "Noches Feten" (2015)

**\**DÉJÀ-VU* by *Cia. Manolo Alcántara* (2019)**

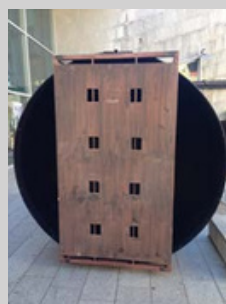
He has also participated in others such as: *Tranuítes* with *Lluís Llach* and *Lluís Danés*, *Wasteland* de *Lluís Danés*, *ART* de *Manel Camp*, *El Col·leccionista de Paissatges* de *Xavier Erra*, *PAS* de *Sergi Ots*, among others.

# TECHNICAL REQUIRIMENTS

- **DURATION: 60-65 minuts**
  - **STGE:**
    - **The most suitable measurements:**
      - **Depth: 10 meters**
      - **Width: 11 meters**
      - **Height: 7 meters (from stge floor to electric bars)**
      - **Lateral sides: 2 meters (both sides)**
    - **Minimal measurements:**
      - **Depth: 9 meters**
      - **Width: 9 meters**
      - **Height: 5,50 meters (from stage floor to electric bars)**
      - **Lateral sides: 1.5 meters (both sides)**
    - **Stage:**
      - **Totally flat floor. No slope**
      - **An anchor point or 300kg weight in the centre behind backrop (The company will supply the base for the anchor).**
- Please refer to the following photographs.**



- **Access to the stage:**
  - **Direct vehicle access to the stage.**
  - **Very large stage prop (one whole piece): 2 meters x 2 meters x 1.5 meters. Please refer to the following photographs:**





- **ADDITIONAL PROPS INFORMATION:**

- The completed shelf: 6 meters length x 3 meters height x 1.5 meters width (400kg)
- Completed hat: 3 meters diameter x 1.60 meters depth

- **STAFF:**

- Unloading + Set up: 4 people (2 hours)
- Set up and performance: 1 Sound Technician  
1 Light Technician  
1 Machinist
- Dismantle and load up: 4 people, 30 minutes after show (2 hours)

- **SET UP:**

- Total: 7 hours
- Download: 1 hour (If vehicle access to the stage is direct and on the same level)
- Set up: 2 hours
- Set up of lights and focusing: 4 hours

(The best option would be to be able to set up the day before (or to start offloading and setting up the props a bit earlier))

- **PACKING UP:**

- Packing up and load: 3 hours

- **CURTAIN SHOW:** Italiana curtains. 3 legs on each side.

- **LIGHTING:** (+ Lighting rig plan attached)

- Dimmer:  
48 ch 2kw  
dmx 512
- Control:  
The company has an Enttec control (total control over the lighting)
- Musical instruments:  
16 Pars 64 cp62  
22 Profile 1kw  
23 Pc 1kw  
2 Pc 2Kw
- Smoke Machine (supplied by the company)

- **SOUND:**

- 4 Monitors on the stage (2L + 2R)
- PA (according to the dimension of the venue)
- 2 Wireless microphones (supplied by the company)
- Sound card 4in/4out (supplied by the company)
- Mixer 6 channels
- Ch1/2 Pc
- Ch3 mic 1
- Ch4 mic 2
- Ch5 rtn mic 1
- Ch6 rtn mic 2
- Aux1 Monitor L
- Aux2 Monitor R
- Aux3 send mic1

- **MATERIAL:**

- 1 Coatrack on the stage

- **DRESSING ROOM:**

- 2 Dressing rooms with mirror, bathroom and shower (hot water if possible). Towels would be very much.
- Bottled water during set up and performance (off - and on - stage)

- **PARKING:**

- Truck: 7 meters long x 3 meters heigh
- Trailer: 6 meters long x 3 meters heigh x 2.2 meters width
- License plate: 5930KTK
- Model: IVECO DAILY (truck) + Trailer
- Total: 13 meters

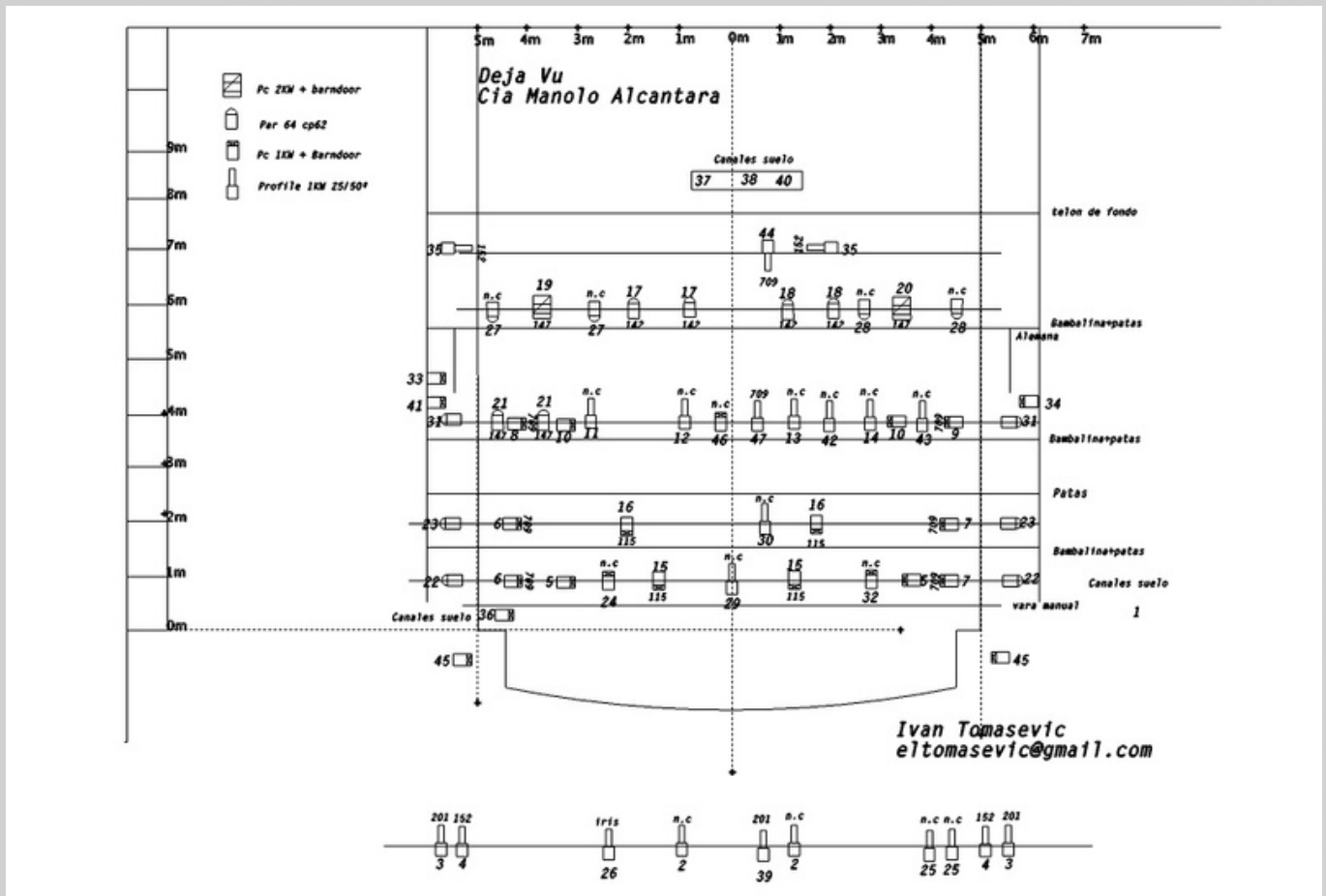




- **TEAM ON TOUR:**

- 2 Artists
- 1 Musician
- 1 Stage assistant
- 1 Technician
- 1 Road Manager (not always)

- **LIGHTING RIG PLAN**



- **CONTACT:**

- **Road Manager:**

Clàudia Saez +34 633 357 778 - [info@ciamanoloalcantara.com](mailto:info@ciamanoloalcantara.com)

- **Lighting and sound technician:**

Ivan Tomasevic +34 698 317 936 - [eltomasevic@gmail.com](mailto:eltomasevic@gmail.com)

**IMPORTANT NOTE:**

Please be assured that we are open to discussion if any of our requirements are unable to be met.

Many thanks!



# CONTACT

**CIA. MANOLO ALCÁNTARA**

**info@ciamanoloalcantara.com**

**T. +34 633 357 778**

**+34 629 384 996**

**f i v @ciamanoloalcantara.com**

## *International Distribution*

**Alapista**

**info@alapista.com**

**T. +34 657 488 149**

**+34 639 654 489**

## *National Distribution*

**Portal 71**

**rociopindado@portal71.com**

**T. +34 635 708 999**

Production:



Production Support:



Co-Production:



Supported by:



In Collaboration with:

